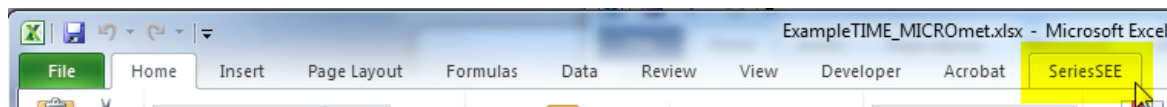


## ***Installation of Add-In***

SeriesSEE works correctly in Excel 2010 or greater. SeriesSEE can be installed in Excel 2007, but is hobbled by poor charting performance. SeriesSEE cannot be installed in Excel 2003 or earlier versions of Excel.

SeriesSEE is used through a tab on the ribbon that is created after the right-most tab (Figure 1). The SeriesSEE tab appears after the Add-In has been installed (table 1). The SeriesSEE add-in, *SeriesSee.V1.20.xlam*, functions like an installed program, because it is always available in Excel and the user can forget where the Add-In is installed.

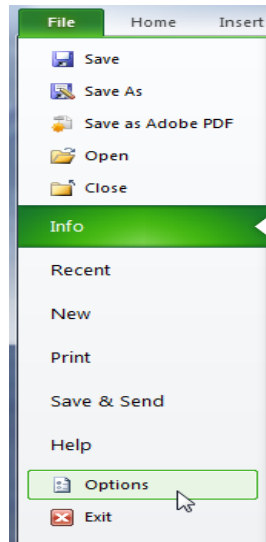


**Figure 1.—SeriesSEE tab that appears in the ribbon after successful installation in Excel 2010+.**

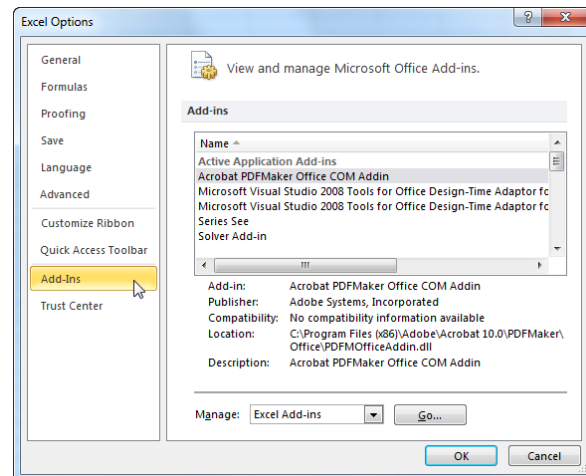
The distribution folder, **AppendixA\_SeriesSEE.v.1.20**, should be unzipped and on a local drive before following the “***Install the SeriesSEE add-in***” instructions. Close this file and move the directory if need be before proceeding.

### ***Install the SeriesSEE add-in.***

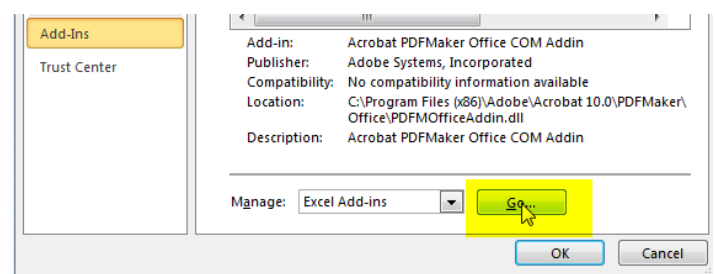
Click on Options  
under the File menu of Excel 2010+.



Select Add-Ins  
on the Excel 2010+ Options form



Click on Go... right of the  
“Manage: Excel Add-Ins”

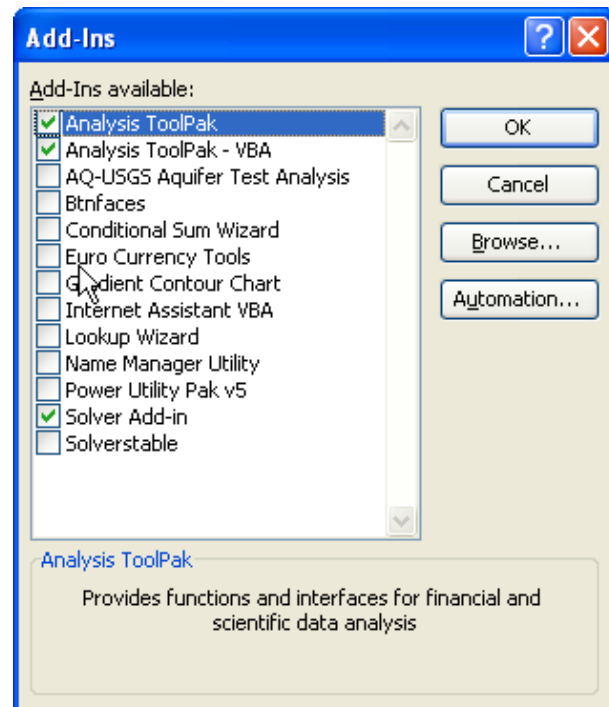


The Add-Ins dialog window will appear. A SeriesSEE checkbox will not appear the first time the Add-In is used.

Click on the Browse... button and find the file *SeriesSee.V1.20.xlam* in whatever directory you tossed it.

SeriesSEE generally is not dependent on other add-ins in menu.

The Solver Add-In is the only exception and is called by the Align and PolyFit utilities.

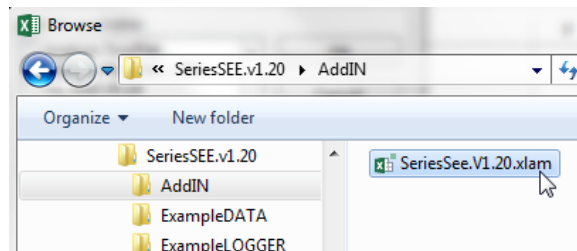


The Browse... for Add-In will start in the standard Excel add-in folder, C:\Documents and Settings\USERNAME\Application Data\Microsoft\AddIns.

Browse to the folder of your choosing.



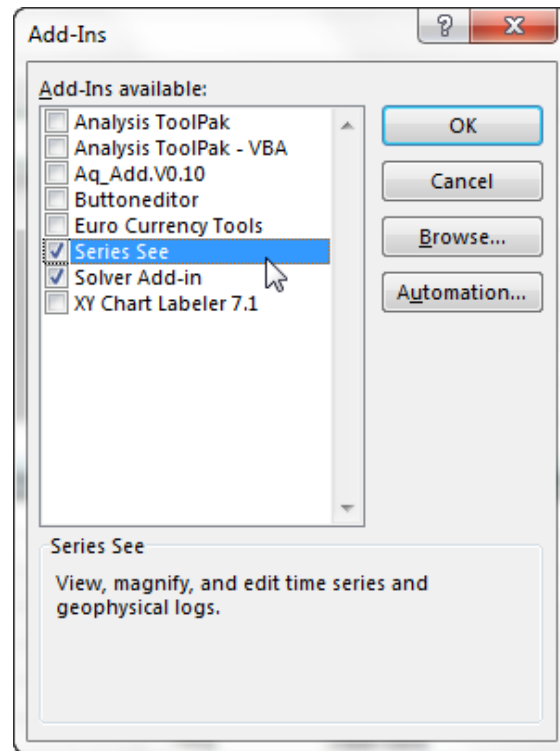
Open the SeriesSee.V1.20.xlam file.



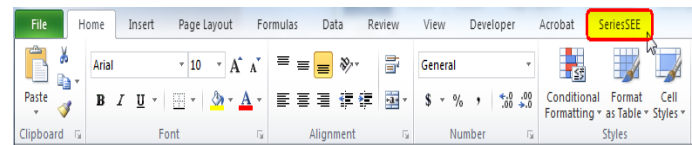
SeriesSEE will appear in the Add-Ins dialog window. SeriesSEE can be installed and uninstalled on this machine by checking and unchecking the SeriesSEE option without browsing after the first installation.

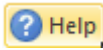
SeriesSEE is not dependent on other add-ins in menu

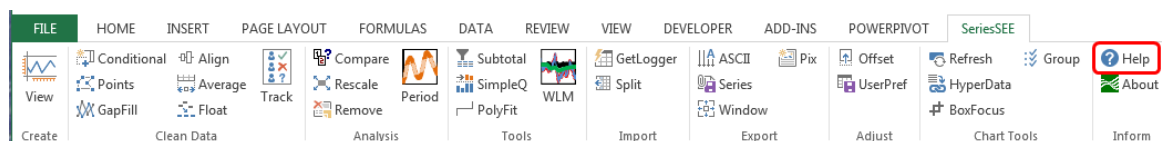
The Solver Add-In is the only exception and is called by the Align and PolyFit utilities.



The SeriesSEE menu appears after the Add-In has been installed



Selecting SeriesSEE reveals a menu with utilities for creating a viewer, manipulating data, water-level modeling, and specifying user preferences (Figure 2). Select help, , to explain all utilities in SeriesSEE.



**Figure 2.—Commands on the SeriesSEE tab.**

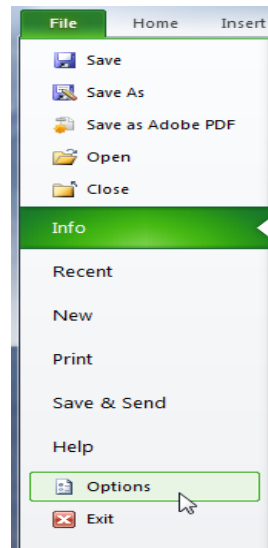
[Previous](#) —●— [Next](#)

## ***Make Life Easier***

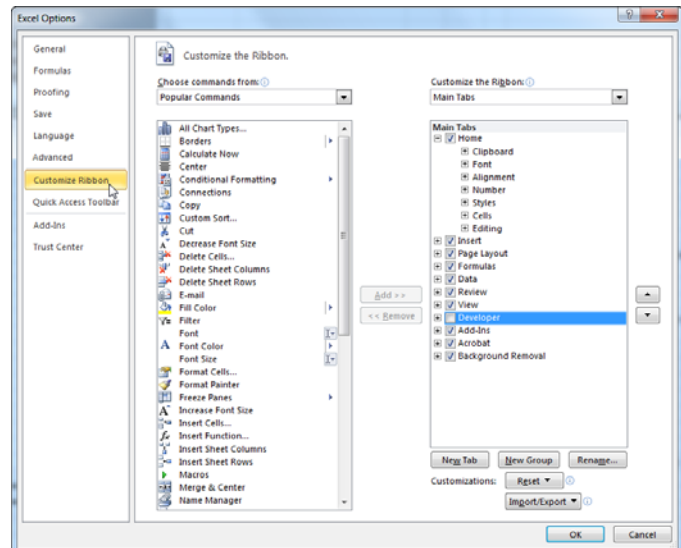
Usage of SeriesSEE and Excel can be expedited by modifying default options in Excel for file ribbon settings, directories, and backup. SeriesSEE and other add-ins can be accessed more directly if the Developer tab is visible. The default file directory is a username directory under some “My Documents” folder, which usually goes unused if you navigate through files with Windows Explorer. The automatic backup guarantees that your work will be interrupted every 10 minutes, but likely will not create a recoverable workbook if any complexity exists.

## Modify options in Excel

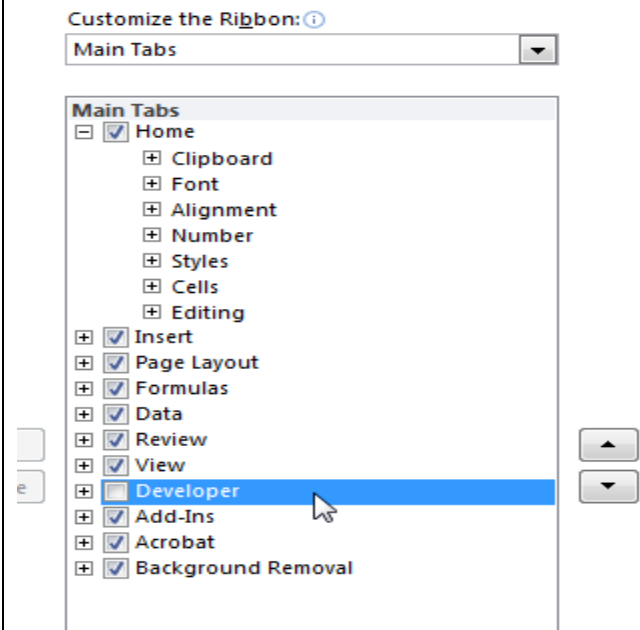
Click on Options  
under the File menu.



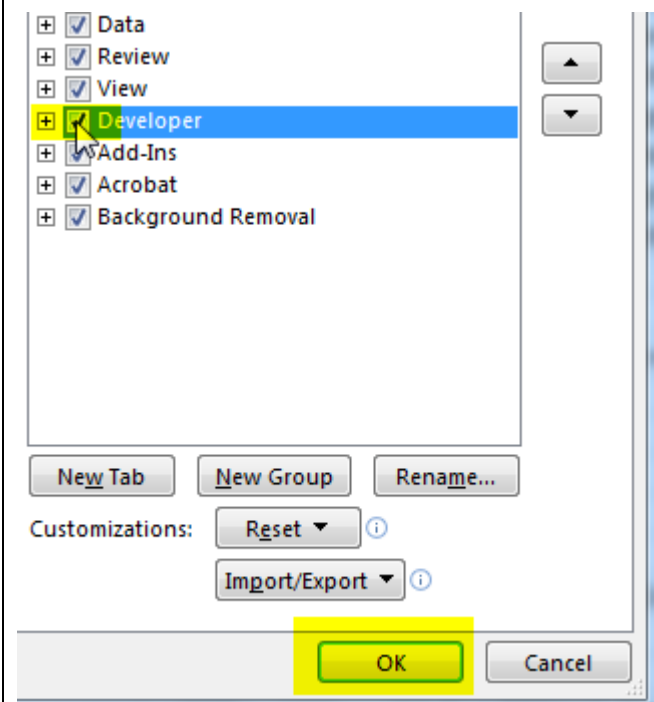
Select Customize Ribbon  
on the Excel Options form



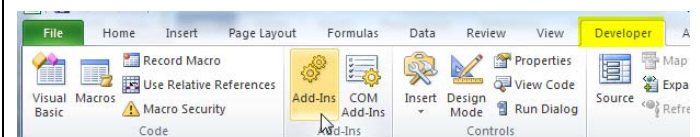
The Developer tab is unchecked by default.



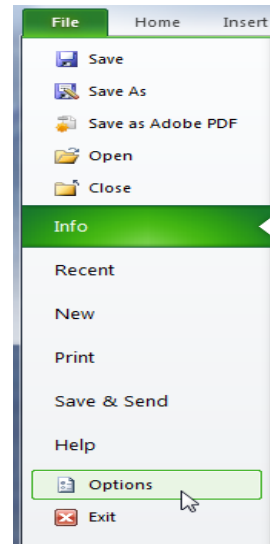
Check the Developer tab and Select OK.



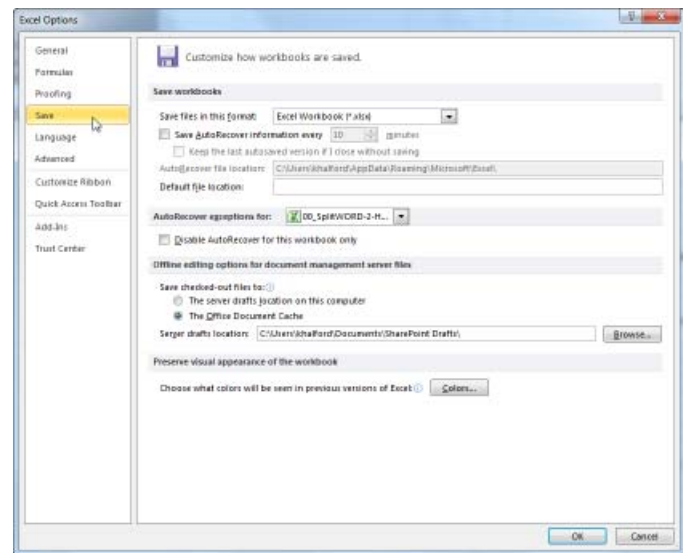
The Developer tab will appear in the ribbon, which gives direct access to the Add-Ins control.



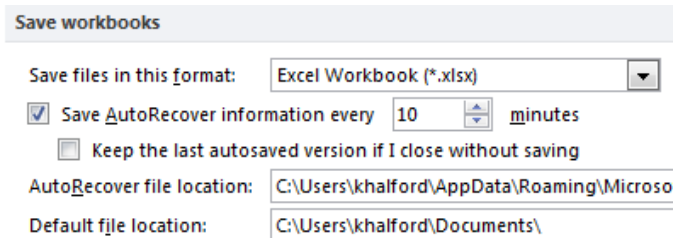
Click on Options  
under the File menu.



Select Save  
on the Excel Options form



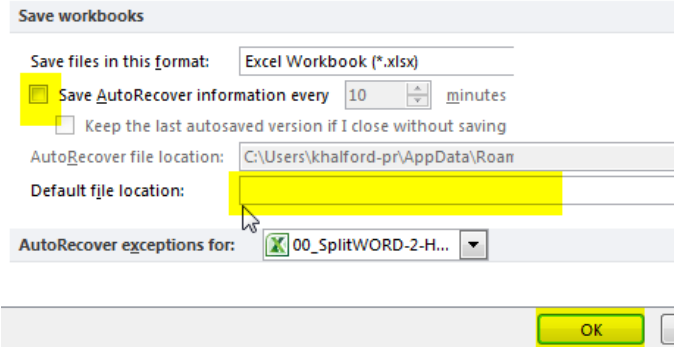
Default options in “Save workbooks”  
Save AutoRecover... is checked  
A default file location is specified.



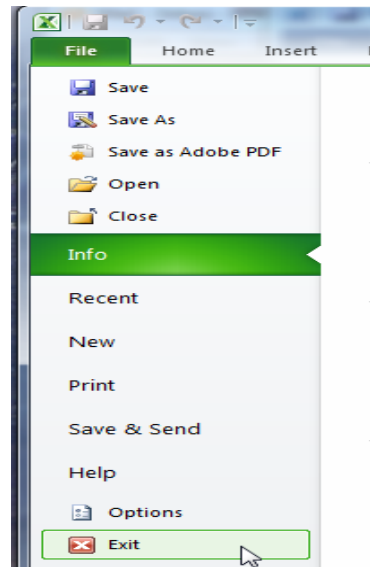
Change options in “Save workbooks”  
Uncheck Save AutoRecover...

Delete default file location and  
leave BLANK.

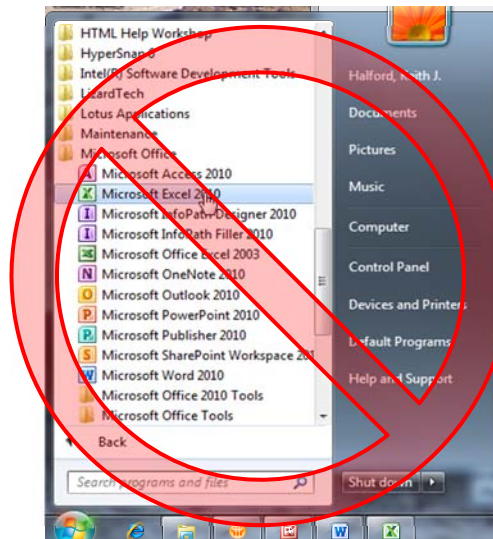
Check OK in lower, right corner of  
form.



Exit Excel completely.  
Changes in effect next time Excel is  
opened.



Default file location will be where  
Excel is installed if Excel is started  
from the Windows Start menu.





Navigate to the files of interest with Windows Explorer and double-click or right-click to “open with” on the workbook of interest.

The default directory will be where Excel was started.

