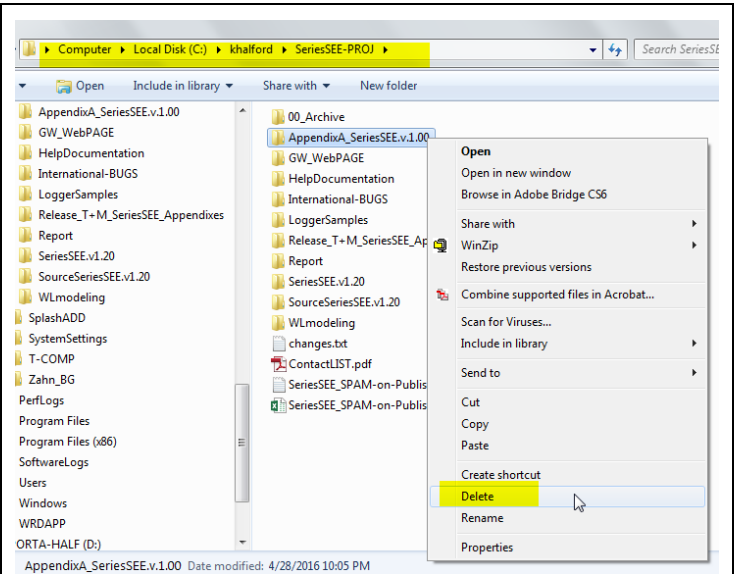


Update of Add-In

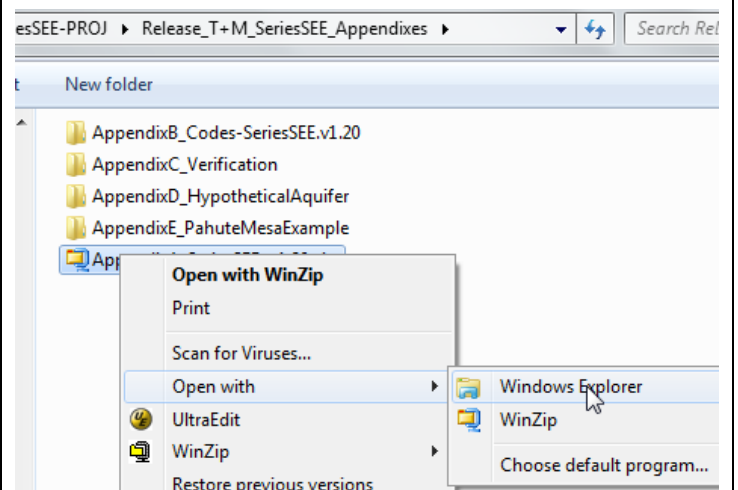
Update the SeriesSEE add-in.

Navigate to existing folder that contains SeriesSEE.v1.00 and delete the folder.

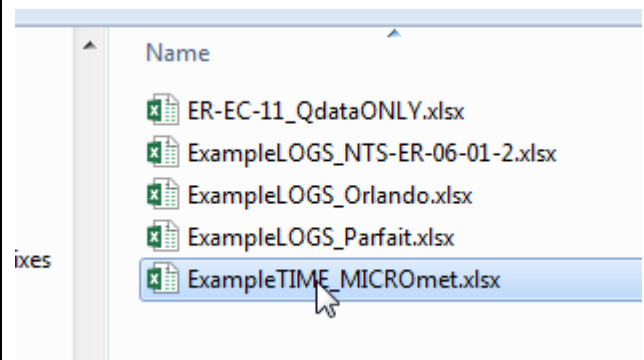
The folder is AppendixA_SeriesSEE.v.1.00 in this example.

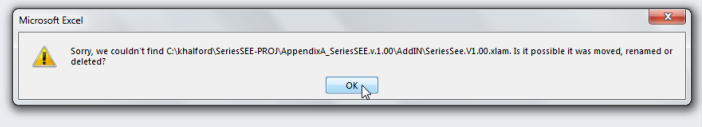
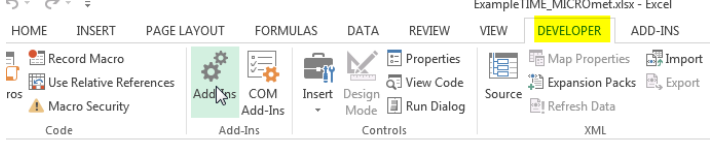
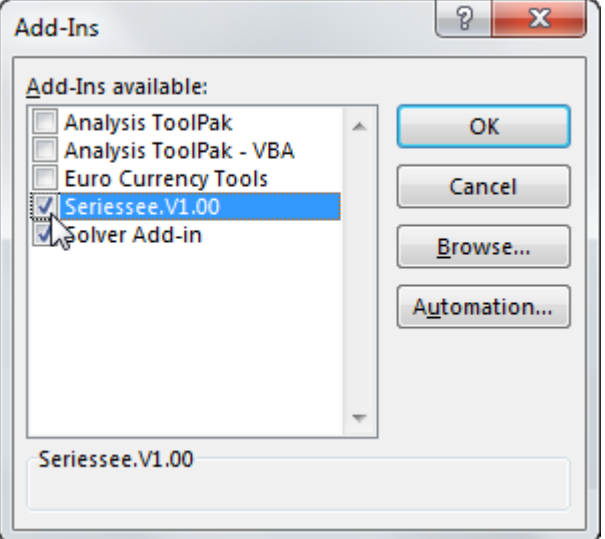
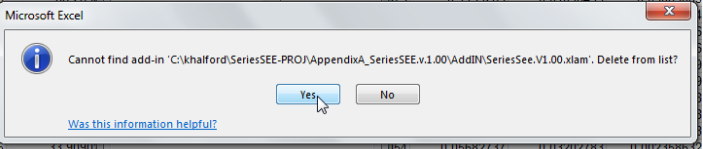
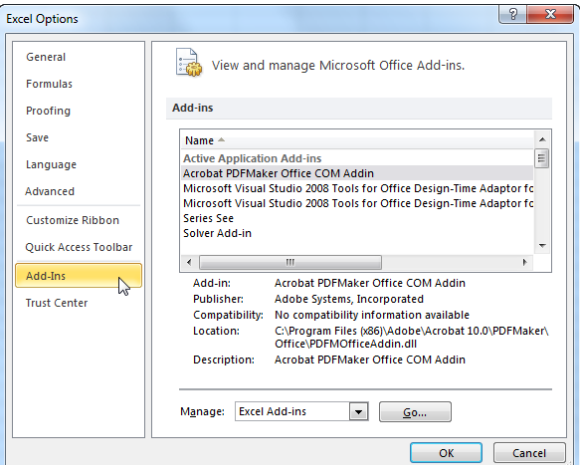


Expand the zip file AppendixA_SeriesSEE.v.1.20.zip where the SeriesSEE.v1.20 will reside.

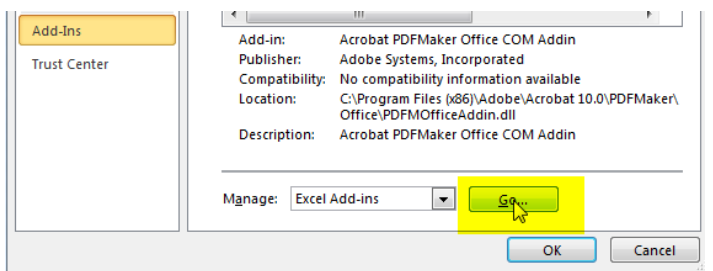


Open Excel.



<p>An error message will appear warning you that SeriesSEE.v1.00 is missing. Click OK.</p>	
<p>Click the Add-In option on the Developer tab. (You should have made this visible when installing V1.00.)</p>	
<p>The Add-Ins form will appear.</p> <p>Uncheck Seriessee,v100.</p>	
<p>A query will appear, inform you that SeriesSEE.v1.00 is missing, and ask if it should be deleted from the list. Click YES and have it deleted.</p>	
<p>Select Add-Ins on the Excel 2010+ Options form</p>	

Click on Go... right of the "Manage: Excel Add-Ins"

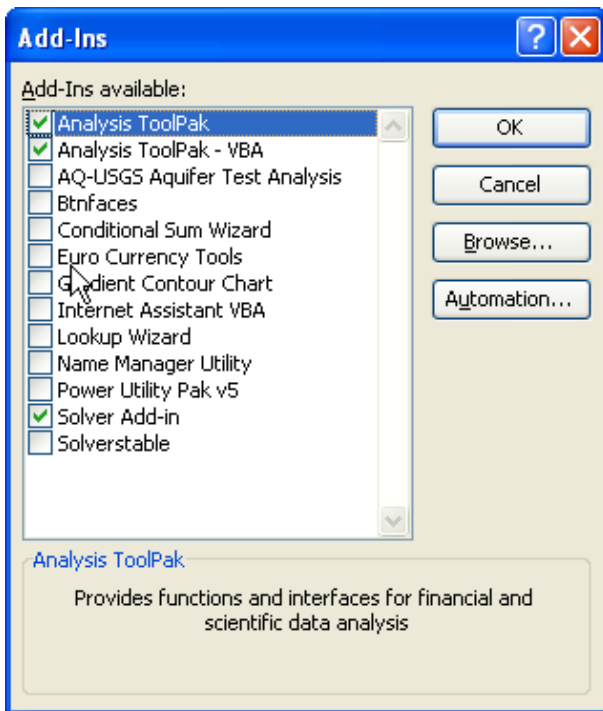


The Add-Ins dialog window will appear. A SeriesSEE checkbox will not appear the first time the Add-In is used.

Click on the Browse... button and find the file *SeriesSee.V1.20.xlam* in whatever directory you tossed it.

SeriesSEE generally is not dependent on other add-ins in menu.

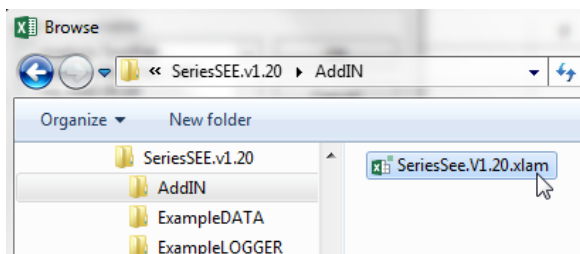
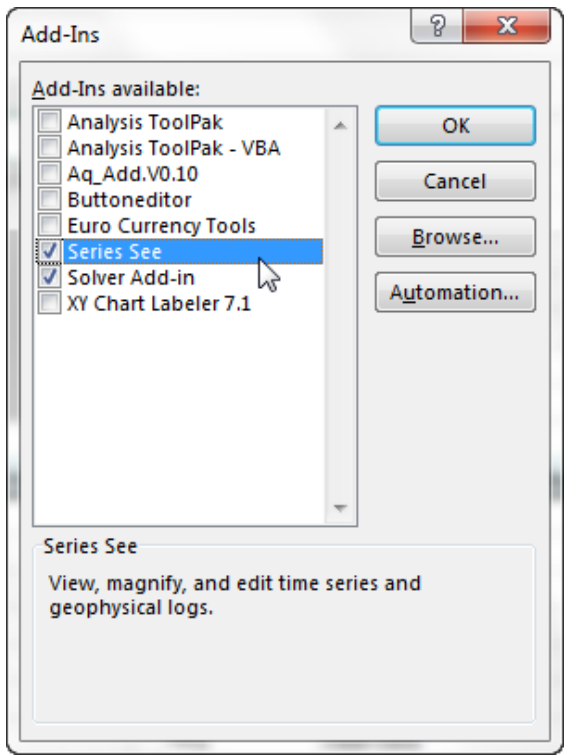
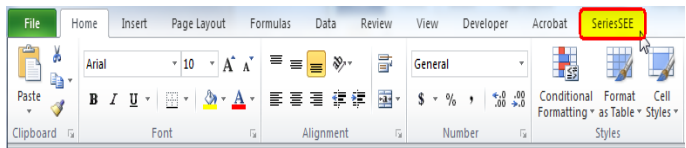
The Solver Add-In is the only exception and is called by the Align and PolyFit utilities.

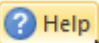


The Browse... for Add-In will start in the standard Excel add-in folder, C:\Documents and Settings\USERNAME\Application Data\Microsoft\AddIns.

Browse to the folder of your choosing.



<p>Open the SeriesSee.V1.20.xlam file.</p>	
<p>SeriesSEE will appear in the Add-Ins dialog window. SeriesSEE can be installed and uninstalled on this machine by checking and unchecking the SeriesSEE option without browsing after the first installation.</p> <p>SeriesSEE is not dependent on other add-ins in menu</p> <p>The Solver Add-In is the only exception and is called by the Align and PolyFit utilities.</p>	
<p>The SeriesSEE menu appears after the Add-In has been installed</p>	

Selecting SeriesSEE reveals a menu with utilities for creating a viewer, manipulating data, water-level modeling, and specifying user preferences (Figure 3). Select help, , to explain all utilities in SeriesSEE.

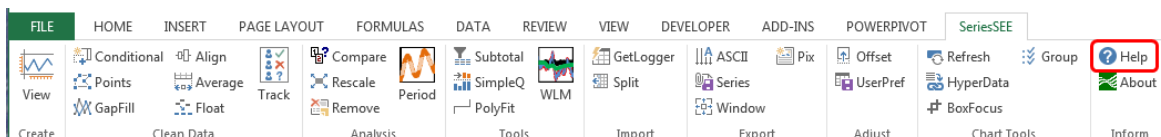


Figure 1.—Commands on the SeriesSEE tab.